

IPD501

Teaching Staff

Mark Yim

Pete Szczesniak

Aedhan Loomis

Joe Valdez

Justin Chang

Courtney Kobata

Alex Zhou

Ilana Teicher

Students

Course History

Jonathan Fiene

Mark Yim

Future...

Course Goals

Introduce different prototyping methods

Utilize the design process

Develop a portfolio

Work in teams for design and manufacturing

Grading

Consider the teaching staff your client and deliver projects and assignments as you would to a paying client.

Quality of work (50%)

Was your work at professional quality?

On time (40%)

Was your project submitted on time?

Project reflection on Canvas (10%)

An assignment will be posted on canvas towards the end of each project. It will include:

- A place to submit a minimum of 5 pictures showing your work throughout the project
- A long answer (~3 paragraphs) question
- A few short answer questions
- Feedback for yourself and teaching staff

Teaching Staff Responsibilities

Have materials and equipment available on time and when promised

Make resources available as needed with enough warning: eg. extended shop hours when requested, non-standard justified equipment

Provide informative and time-efficient lectures and resources

Answer questions or direct to informative resources when answers are not known

Make this a fun course :)

Course Resources

MEAM Design IPD 501 Page

Main course page. Projects, schedule, all links, assignments, and deadlines

Piazza

Announcements, Q+A, etc...

Canvas

Grading and project reflections

Schedule

PDR

Preliminary Design Review

CDR

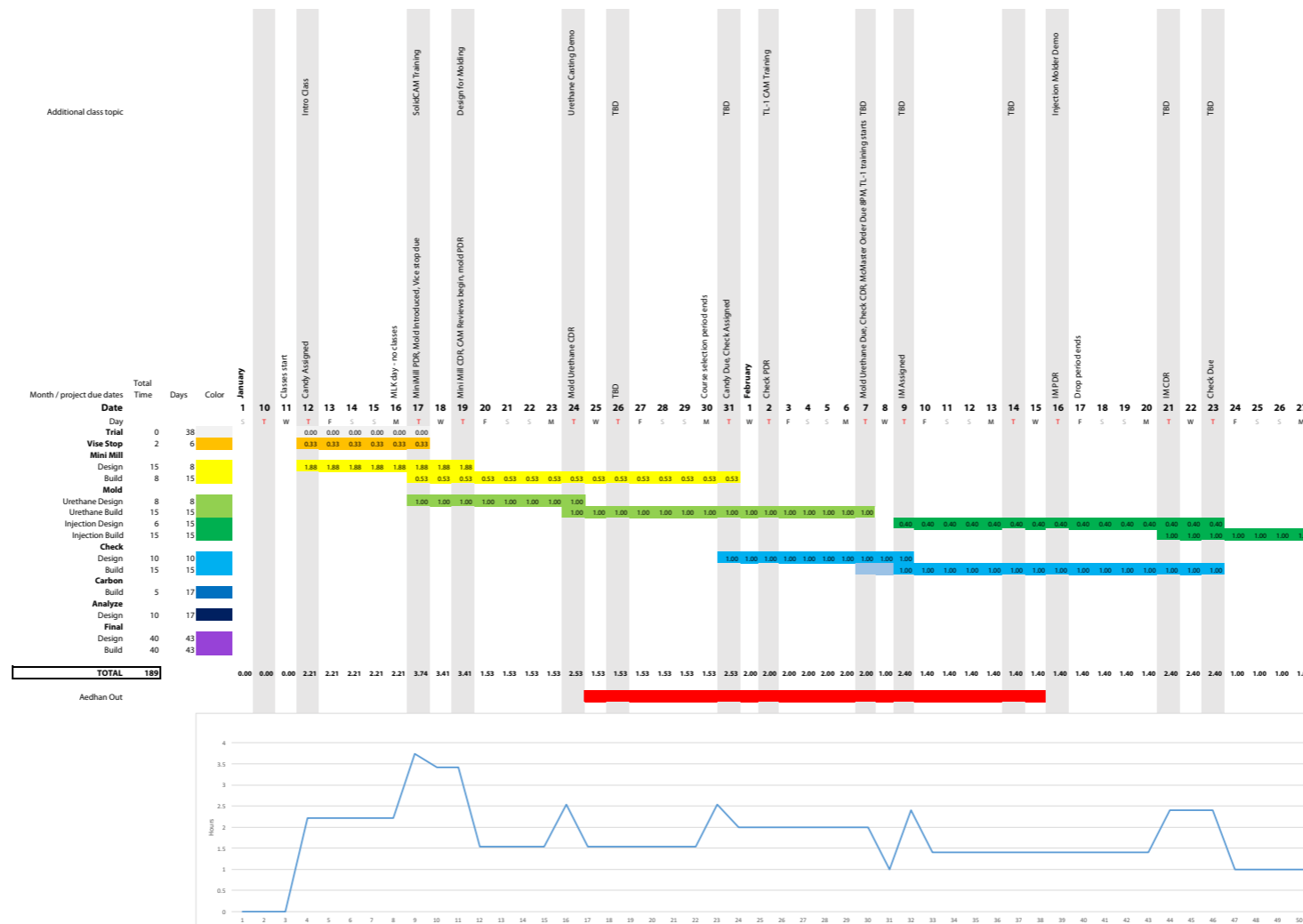
Critical Design Review

Manufacturing Begins

Project Due

Schedule

Download detailed and up-to-date schedule on MEAM Design IPD 501 main page



Tips for the class...

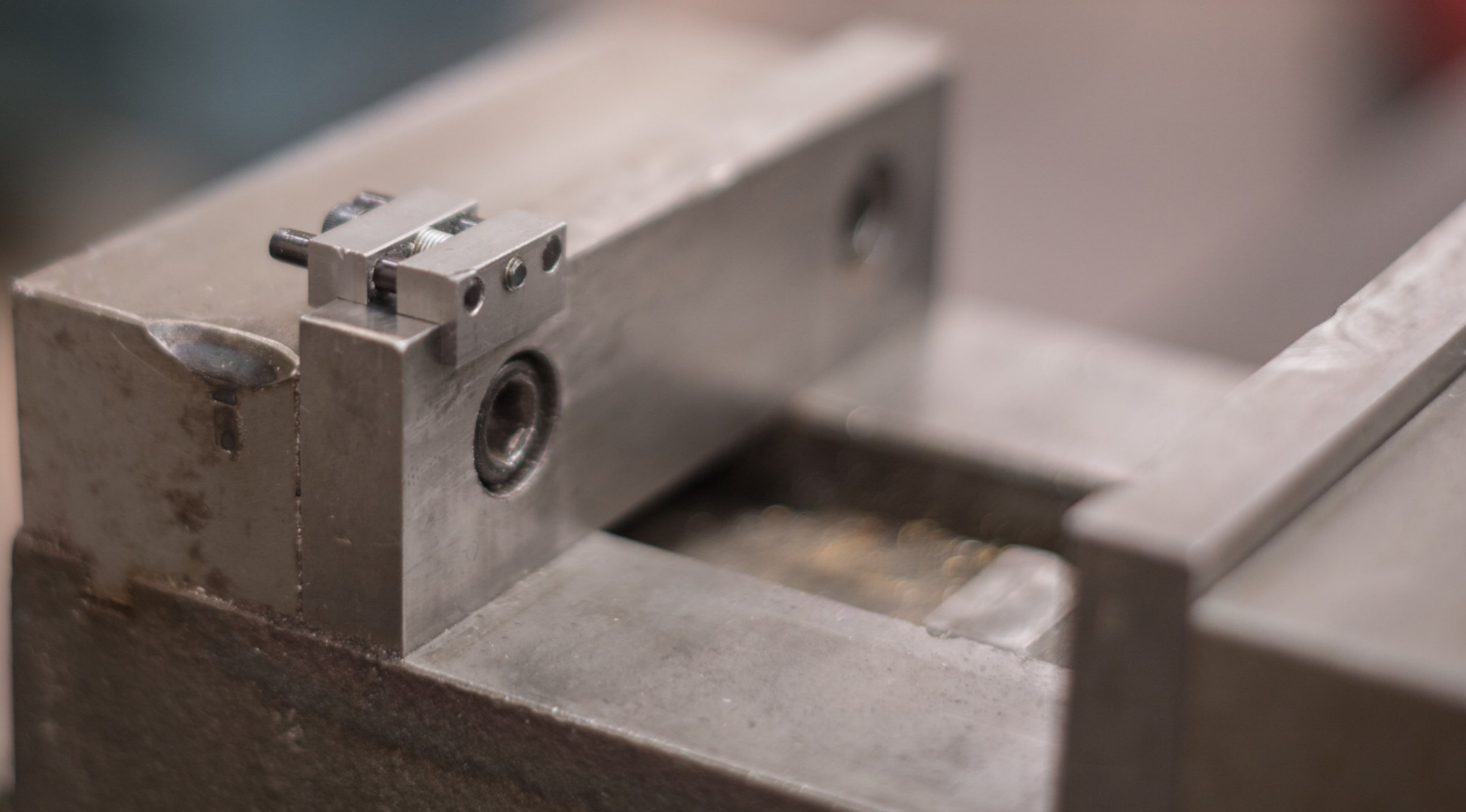
Keep things simple

Dedicate time to this class

Photograph your progress and work

Keep a notebook with ideas, calculations, results, and anything else relevant to projects

Vise Stop



Candy

ASTM B 221

ALCDA 6061 T6 ASTM B221

ALCDA 6061 T6 ASTM B221

ASTM B 221 ALCDA 6061 T6511 171421-001 ASTM B 221

ASTM B 221 ALCDA 6061 T6511 171421-001 ASTM B 221

44 X 11 1/4