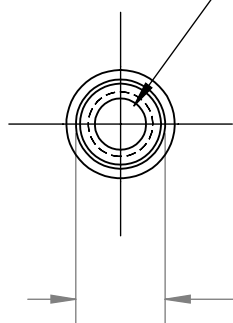
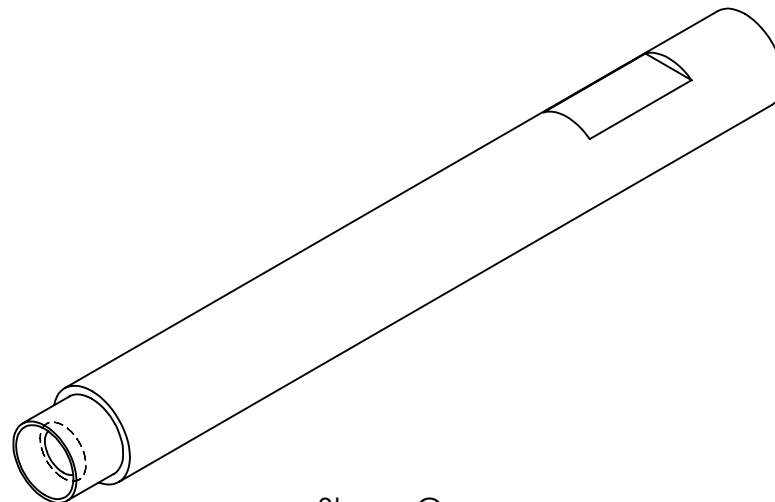


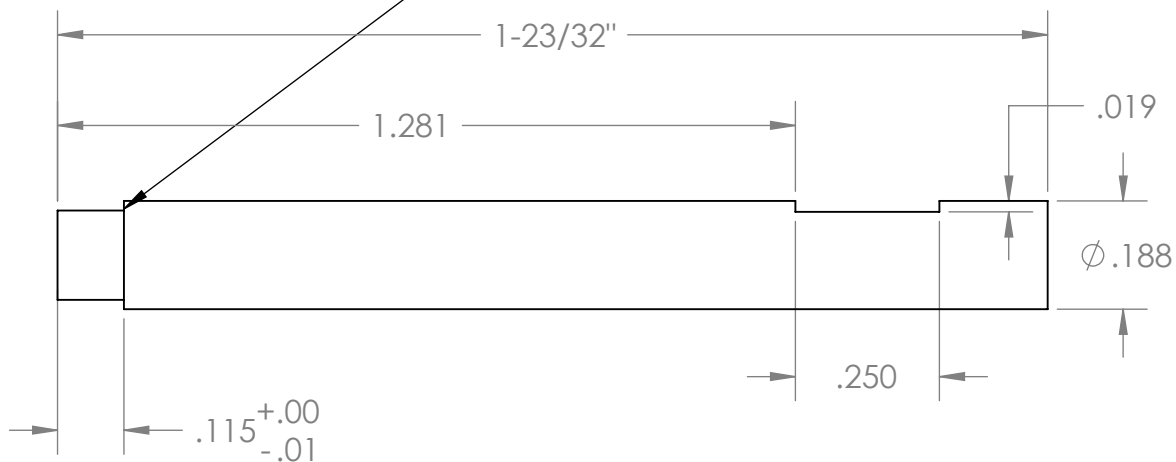
$\checkmark \ \phi 9/64 \times 60^\circ$   
 UNC 4-40 2B  $\nabla 1/4$  MIN  
 Note: #43 Drill  $\nabla 9/16$



$\phi .155^{+.000}_{-.001}$



Sharp Corners



**PROPRIETARY AND CONFIDENTIAL**  
 THE INFORMATION CONTAINED IN THIS  
 DRAWING IS THE SOLE PROPERTY OF  
 <INSERT COMPANY NAME HERE>. ANY  
 REPRODUCTION IN PART OR AS A WHOLE  
 WITHOUT THE WRITTEN PERMISSION OF  
 <INSERT COMPANY NAME HERE> IS  
 PROHIBITED.

		UNLESS OTHERWISE SPECIFIED:		NAME	DATE	TITLE:  Output Shaft											
		DIMENSIONS ARE IN INCHES	DRAWN	CX	3/21/10												
		TOLERANCES:	CHECKED	CX	6/2/10												
		FRACTIONAL ±1/64	ENG APPR.														
		ANGULAR: MACH±1 BEND ±	MFG APPR.														
		TWO PLACE DECIMAL ±.01				SIZE <b>A</b>			DWG. NO.  18			REV <b>D</b>					
		THREE PLACE DECIMAL ±.005															
		FOUR PLACE DECIMAL ±.0005															
		INTERPRET GEOMETRIC	Q.A.			COMMENTS: BREAK ALL EDGES AND SHARP CORNERS.			SCALE: 3:1			WEIGHT:			SHEET 1 OF 1		
206		MATERIAL 303 SS Rod															
NEXT ASSY	USED ON	FINISH NONE															
APPLICATION		DO NOT SCALE DRAWING															